



Installation Guide

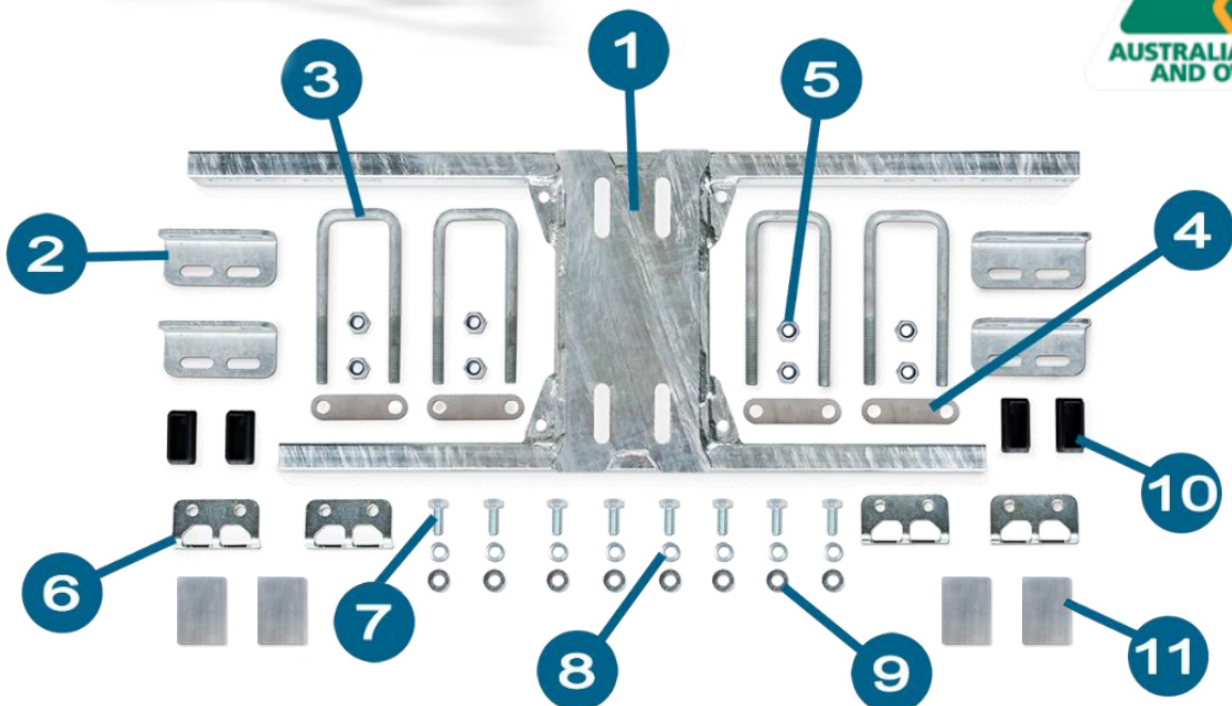
Extreme Duty Adjustable H-Mount for Caravans and Camper Trailers

iSi-HM-AL-(690, 810, 910, 1110)

Thank you for your purchase of the *iSi* Extreme Duty Adjustable H-Mount®.

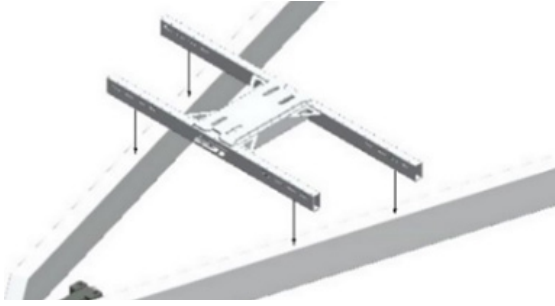
The bolt-on *iSi* adjustable H-Mount is an incredibly strong mount that braces the drawbar arms and eliminates drawbar pressure hot spots by spreading the load over a wide area.

Slotted brackets allow adjustment over a wide area to achieve the perfect position.



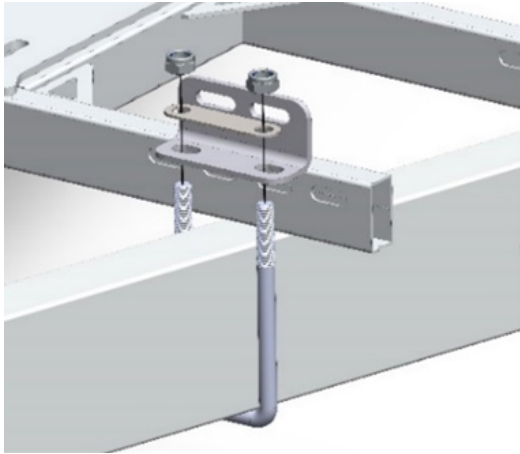
- | | | |
|-----------------------------|-----------------------------------|-----------------------------------|
| 1 H-Mount qty 1 | 5 M12 Nyloc Nut qty 4 | 9 10mm Washer qty 8 |
| 2 Foot Bracket qty 4 | 6 Nut Pad qty 4 | 10 End Cap qty 4 |
| 3 U-Bolt qty 4 | 7 M10 Bolt qty 8 | 11 Levelling Packers qty 4 |
| 4 Washer Plate qty 4 | 8 10mm Spring Washer qty 8 | |

Tools - 17, 18, 19mm box/open wrench



Determine the ideal position of the H-Mount (Item 1) on the drawbar and place the H-Mount (item 1) onto the drawbar.

Hint: You will be able to fine tune the position later.



Install U-bolts from underneath the drawbar arms and pass through the shorter slots in the Foot Bracket (item 2). Lower the Washer Shim (Item 4) and retain with the M12 Nyloc Nuts (Item 5).

Hint: Do not tighten yet.

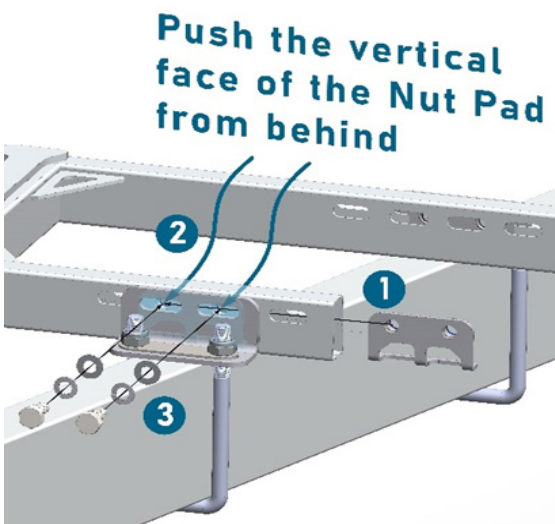
Hint: Install foot brackets on either side of H-Mount arms to clear ESC controllers, jockey wheels or other draw bar obstacles

Hint: Levelling packers (Item 11) are used:

-To ensure the H-Mount is level when interference occurs. (i.e some trailers have welded chassis writing on top face of draw bar)

-When the draw bar arms are not completely level

-To fine tune minor clearances (i.e two packers under the rear H-Mount arm)



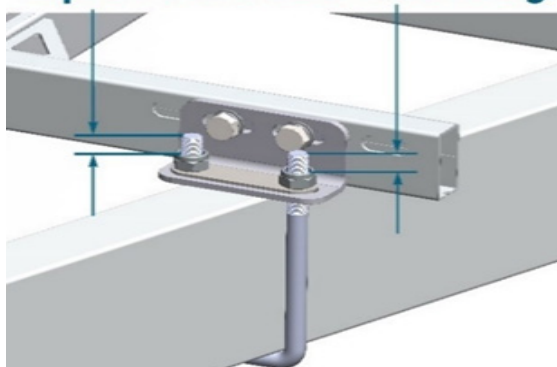
1 - Insert the Nut Pad (Item 6) into the H-Mount arm and align with the slots in the Foot Bracket (Item 2).

2 - Push the vertical face of the Nut Pad from behind to ensure that Nut Pad is hard up against the side of the H-Mount arm.

3 - Install the 10mm Spring and Flat Washers (Items 8 & 9) and M10 Bolts (Item 7) through the slots in the Foot Bracket and H-Mount arm tube.

Hint: Do not tighten yet.

Equal Threads Showing



Tighten Nut Pad bolts (Item 7) to 60 Nm torque (really tight).

Check that U-bolts are still vertical and then tighten each nut half a turn at a time until a tightening torque of 35 Nm is achieved.

Hint: Tighten each leg of U-bolt evenly so that each leg has equal number of threads showing above each nut.



Install End Caps (Item 10) into the end of each H-Mount arm.



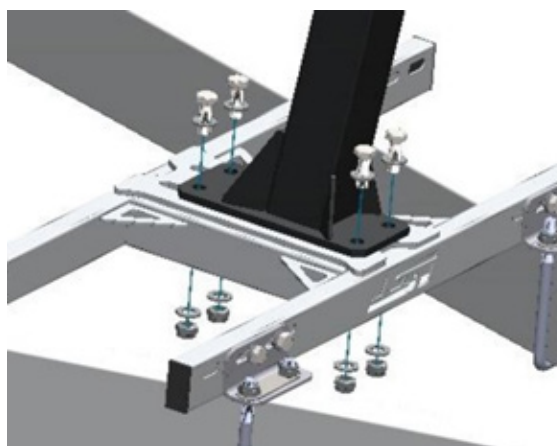
Optional - Gas Bottle Support Plate Kit

Some caravans require precise H-Mount fitment under gas bottles. The gas bottle support plates are installed above the H-Mount tube in the ideal position to house Gas bottles.

Includes:

- 2x Aluminium plates
- 4x Self tapping screws

StrongArm Support Post (If Included)



Install the StrongArm support post onto H-Mount flange.
Insert M12 bolts with flat washer through flange holes at base of StrongArm support post.

Insert lock-washer and Nyloc nut onto underside and retain StrongArm post to Cross-Mount.

Hint: Do not tighten yet.



Bicycle Carrier Main Beam

Lower the bicycle carrier main beam over the top of the support post and insert the upper pivot pin.

Rotate the carrier main beam rearwards until the lower sleeve at the nose of the carrier rests against the stop pad on the StrongArm support post.

Insert the lower pivot pin and install the R-Clips at the end of each pivot pin.



Install the rear wheel support cradles and check clearance to caravan or camper body. Align and adjust H-Mount position and/or slide StrongArm support post fore/aft along slots in cross mount.

Once aligned tighten all nuts and bolts.



To pivot the carrier assembly up and forwards, remove the lower pin and insert into one of the overhead rotation stop positions. The carrier assembly can then be lifted and pivoted over to the desired stop. This allows easy access to drawbar equipment and to remain attached with bikes loaded.

Before Heading Off



Trailer Articulation

Some vehicle and trailer combinations may see a reduction in trailer articulation. (i.e tray back utes with extensive overhang past the tow bar).

Please test your trailer articulation prior to departure.

The heart of an extreme duty bicycle carrier drawbar solution is the bolt-on iSi adjustable H-Mount. An incredibly strong mount that braces the drawbar arms and spreads the load over a wide area. This eliminates pressure hot spots and is inherently stronger and more rigid than welded cross-tube solutions. The added benefit of the adjustable iSi H-Mount is the ability to precisely set the position of the mount to clear drawbar mounted hardware such as the hand brake, jockey wheel, weight distribution systems, stone guards and storage boxes. The ideal solution for use under the harshest operating conditions.

